

INVENTORY MANAGEMENT SOLUTIONS



Would You Like to ...

- Eliminate unnecessary and costly travel time acquiring daily stock items?
- Always have competitive pricing on storeroom material?
- Eliminate prolonged delivery of stock items?
- Have full inventory and spending control?
- Always have the material on hand needed for facility maintenance?
- Eliminate the cost of procuring last minute items?



Before



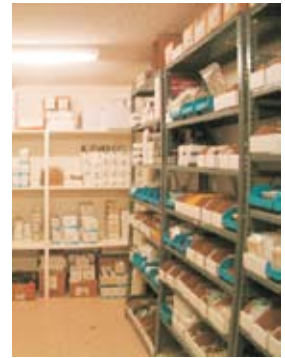
After

We Will Provide You With ...

- A Vendor Managed Inventory program dedicated to providing efficient replenishment of material
- An organized storeroom that utilizes a dependable barcode arrangement
- Material will be billed as it is replenished
- Detailed usage reports will ensure current and competitive pricing
- North Coast Electric will replenish inventory, based on a pre-determined schedule



Before



After

Order#	Description	Qty of Item	Unit Price	Qty/Unit	Customer Order Date
20257976	A-D SWITCH CONTROL SET T-14212345	2	16.0000	POW0103	2/16/2010
8	4000102 GEN 20708 CIRCUIT BREAKER 150 AMP 1500V	2	180.0000	POW0103	2/16/2010
12224107	200V 100A 200V 100A 200V 100A	2	180.0000	POW0103	2/16/2010
12224108	200V 100A 200V 100A 200V 100A	2	180.0000	POW0103	2/16/2010
12224109	200V 100A 200V 100A 200V 100A	2	180.0000	POW0103	2/16/2010
12224110	200V 100A 200V 100A 200V 100A	2	180.0000	POW0103	2/16/2010
12224111	200V 100A 200V 100A 200V 100A	2	180.0000	POW0103	2/16/2010
12224112	200V 100A 200V 100A 200V 100A	2	180.0000	POW0103	2/16/2010
12224113	200V 100A 200V 100A 200V 100A	2	180.0000	POW0103	2/16/2010
12224114	200V 100A 200V 100A 200V 100A	2	180.0000	POW0103	2/16/2010
12224115	200V 100A 200V 100A 200V 100A	2	180.0000	POW0103	2/16/2010
12224116	200V 100A 200V 100A 200V 100A	2	180.0000	POW0103	2/16/2010
12224117	200V 100A 200V 100A 200V 100A	2	180.0000	POW0103	2/16/2010
12224118	200V 100A 200V 100A 200V 100A	2	180.0000	POW0103	2/16/2010
12224119	200V 100A 200V 100A 200V 100A	2	180.0000	POW0103	2/16/2010
12224120	200V 100A 200V 100A 200V 100A	2	180.0000	POW0103	2/16/2010
12224121	200V 100A 200V 100A 200V 100A	2	180.0000	POW0103	2/16/2010
12224122	200V 100A 200V 100A 200V 100A	2	180.0000	POW0103	2/16/2010
12224123	200V 100A 200V 100A 200V 100A	2	180.0000	POW0103	2/16/2010
12224124	200V 100A 200V 100A 200V 100A	2	180.0000	POW0103	2/16/2010
12224125	200V 100A 200V 100A 200V 100A	2	180.0000	POW0103	2/16/2010
12224126	200V 100A 200V 100A 200V 100A	2	180.0000	POW0103	2/16/2010
12224127	200V 100A 200V 100A 200V 100A	2	180.0000	POW0103	2/16/2010
12224128	200V 100A 200V 100A 200V 100A	2	180.0000	POW0103	2/16/2010
12224129	200V 100A 200V 100A 200V 100A	2	180.0000	POW0103	2/16/2010
12224130	200V 100A 200V 100A 200V 100A	2	180.0000	POW0103	2/16/2010